

Traditional Pastries with a zest of 21st century flavor



Pâtisserie des Rêves one of the best and close by 93, rue du Bac, 7e

<http://www.lapatisseriedesreves.com/>

Jacques Génin best Paris-Brest in Paris (repeat this sentence 3 times extremely fast) 133 rue de Turenne 3e, <http://jacquesgenin.fr/>

Popelini only choux à la crème... but excellent ones 29
rue Debelleyme, 3eme <http://popelini.com/>



Des Gateaux et du Pain, reknown for their croissant 63 Bd Pas-
teur, 15e <http://www.desgateauxetdupain.com/>

Ladurée, mostly known for their macarons, 16 rue Royal 8e
more addresses on <http://www.laduree.fr/fr/maisons/paris>



Innovative pastries



Pierre Hermé "Ispahan" is an experience you are not likely to forget... Incredible macarons as well 72 rue Bonaparte, 6eme; more addresses on <http://www.pierreherme.com/>

Pain de Sucre Try the Rosemary (and share it, it is meant for 4 persons), wonderful éclairs, verrines.... 14 rue Rambuteau, 3eme <http://www.patisseriepaindesucre.com/>



Tea in a palace hotel (expensive... 20 Euros for a patisserie, 20 Euros for a drink; dress code)

Christophe Michalak at the Hotel Plaza Athénée, 25 avenue Montaigne <http://www.plaza-athenee-paris.fr/hotel-paris>

Chocolate makers



Christian Constant dark chocolate; ganache with subtle, sometimes unusual flavor - one of the best 37 rue d'Assas 6e

<http://www.christianconstant.fr/>

Jean-Paul Hévin dark chocolate 3 rue Vavin 6e, more addresses on http://www.jphevin.com/content.php?id_article=13



Patrick Roger dark chocolate, creative, visually beautiful as well as tasty 108 Bd Saint Germain 6e, more addresses on

<http://www.patrickroger.com/fr/boutiques.php>

La Maison du Chocolat classical chocolates, expertly made 19 rue de Sevres, more addresses on

<http://www.lamaisonduchocolat.com/fr/boutiques.php?c=paris>



Pierre Marcolini belgian chocolate (with more cream and sugar) 89 rue de Seine 6e, and 3 rue Scribe <http://www.marcolini.com/>

Sadaharu Aoki A surprising french-japanese chocolate fusion 35 rue de Vaugirard,
6eme www.sadaharuaki.com.

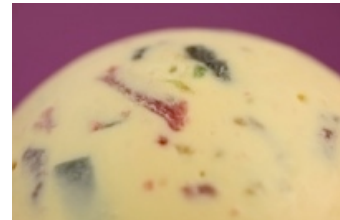


Chocolate Mousse Bar of Patrice Chapon 69 rue du Bac, 7eme
<http://www.chocolat-chapon.com/>

Sorbets & Ice-creams

Berthillon best sorbets in Paris. <http://www.berthillon.fr/>

The main shop in Ile Saint Louis is closed in August, but
there are many resellers, in Ile Saint Louis and Quartier
Latin



Raimo wonderful ice-creams; 65 Bd Saint Germain 5e, 17 rue
des archives 4e and 59 Bd de Reuilly 12e
<http://www.raimo.fr/content/accueil>